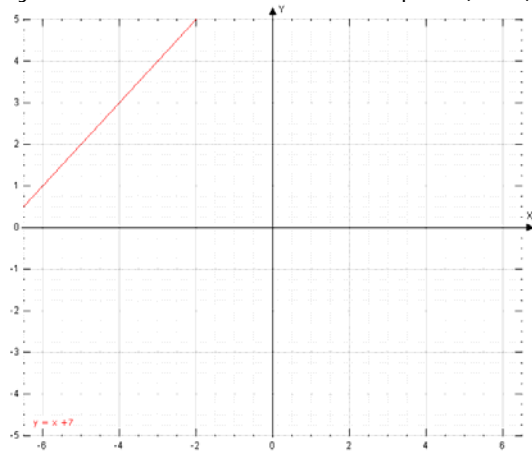


$$Y = X + 7$$

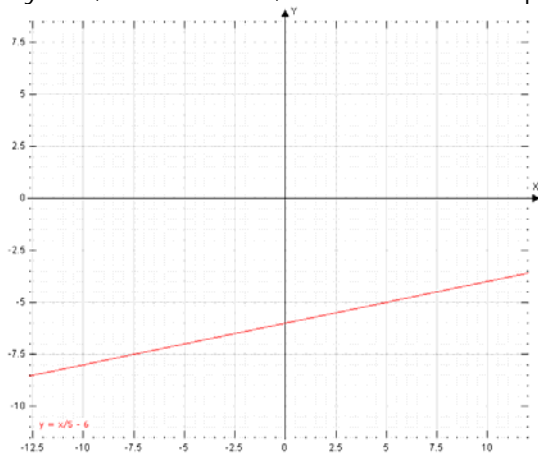
- (i) Put $x = 0$, then $y = 7$ So y intercept is $(0, 7)$
- (ii) Put $y = 0$, then $x = -7$ so x intercept is $(-7, 0)$



(iii)

$$Y = 1/5 X - 6$$

- (i) Put $x = 0$, then $y = -6$ So y intercept is $(0, -6)$
- (ii) Put $y = 0$, then $x/5 = 6$, $x = 30$ so x intercept is $(30, 0)$



(iii)